



# WELCOME HOME

1 N Godley Station Blvd Unit A105  
Pooler GA 31322

[info@gilliardandcompany.org](mailto:info@gilliardandcompany.org)

[WWW.GILLIARDANDCOMPANY.ORG](http://WWW.GILLIARDANDCOMPANY.ORG)

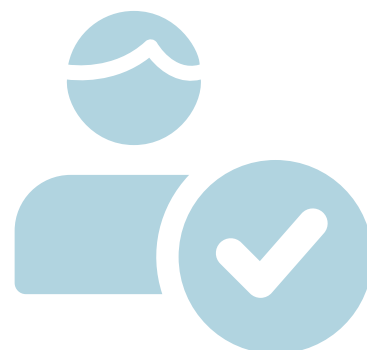
# About Us

Welcome to the Independent Living Program at Gilliard & Co., where we empower young adults transitioning out of foster care to navigate the journey toward self-sufficiency and success. Our program is designed to bridge the gap between foster care and independent living, providing the tools, resources, and support necessary for a smooth and confident transition.

# ELIGIBILITY

Eligibility for our Independent Program will be determined through a thoughtful review of each applicant's situation, with the possibility of exceptions considered on a case-by-case basis. Ideal candidates are:

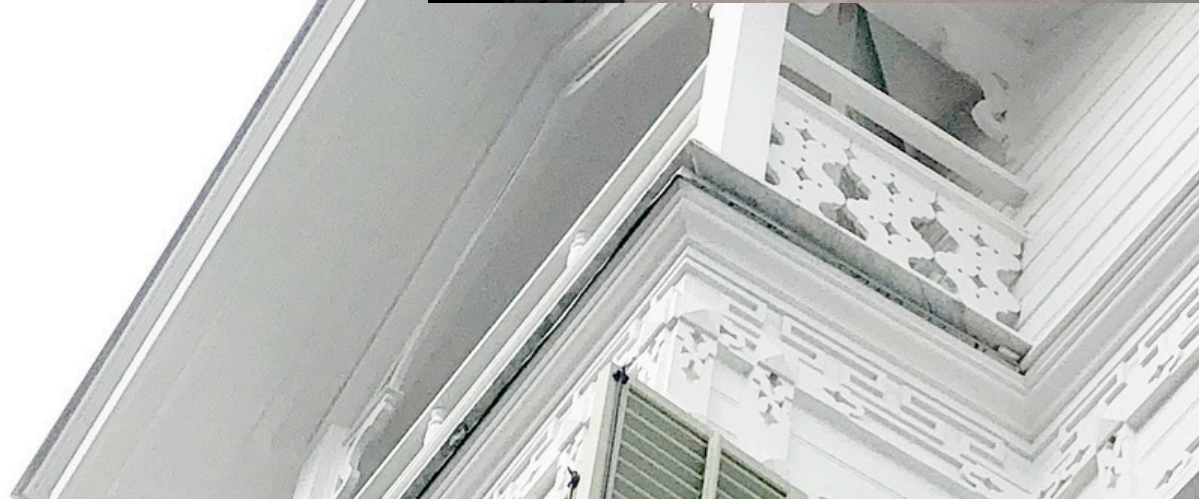
- Young adults aged 18-20, regardless of gender and ethnicity.
- Individuals with no felony convictions or history of illegal substance abuse.
- Those not requiring medication, though exceptions will be made.
- Young adults are capable of making sound decisions.
- Participants must either maintain at least part-time employment (30 hours/week) or be enrolled full-time in school (12+ credit hours) with a willingness to work 20 hours/week.
- Applicants should understand the financial and significant responsibilities of living independently and show motivation toward self-awareness.





## Our Vision

The ILP aims to equip young adults aged 18-21 with the life skills, knowledge, and support networks needed to thrive as independent community members. We focus on personal development, financial literacy, education, employment, and emotional well-being, ensuring a comprehensive approach to independence.



# YOUR HOME



# OUR HOME

1 N Godley Station Blvd Unit A105  
Pooler GA 31322

- Free parking
- Virtually available 24/7
- Open from 9am - 5pm
- Walkability from your future home
  - 1.0 miles (mostly flat), 21 minute walk



# LIVE. WORK. PLAY



# TOP PRIORITY

Guardian Health Alliance is an initiative formed by Gilliard and Company, a philanthropic organization focused on providing housing solutions for young adults transitioning out of foster care. This task force consists of healthcare professionals dedicated to ensuring the medical and advocacy needs of individuals enrolled in the Independent Living Program are met, maintaining adherence to the Room, Board, and Watchful Oversight (RBWO) Standard 23, which emphasizes Health Care Management. The alliance is proactive in identifying and addressing the unmet health requirements of the youth they serve, thereby expanding access to necessary resources and support for all participating individuals.



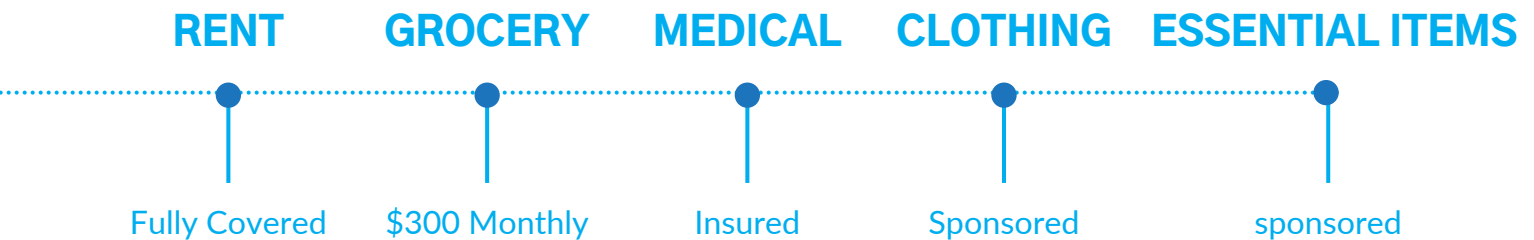
Dr. Shital Patel



DR. DHRUMIL PATEL & DR. KAUSHAL PATEL



# Financial Support & Responsibilities



Gilliard and Company proudly assumes primary financial support for young adults entering our housing program. However, it is essential to emphasize that our clients are expected to demonstrate effort in covering supplemental financial expenses.

This includes securing a job to manage transportation costs when your G&Co Case Manager is unavailable, purchasing clothing (which will be reimbursed), acquiring additional groceries beyond your \$300 monthly grocery stipend, obtaining school supplies, and covering medical expenses not included in your insurance or beyond the allocated sponsorship from Gilliard and Company.

Your independence is a priority for us, and our program serves as a simulation of the real-world experiences you will encounter as you age out of foster care. As you progress through 3 to 6+ month stays with us, you will gradually begin to assume financial responsibilities for utilities and rent, reflecting the realities of independent living.

# SUPPORT PERMANENCY MENTOR

At Gilliard and Company, youth are expected to actively engage with their Permanency Mentor and collaborate on supportive case goal efforts that are essential for their growth and independence. These efforts include:

- **Life Skills Training:** Developing practical skills for daily living.
- **Educational Support:** Ensuring academic success and pursuing further education.
- **Job Readiness Training:** Preparing for employment and career opportunities.
- **Housing Assistance:** Securing stable and appropriate housing.
- **Counseling and Mental Health Support:** Accessing emotional and psychological care.
- **Access to Community Resources:** Utilizing available community programs and services.
- **Financial Literacy Education:** Learning to manage finances and budgeting.

Working closely with their Permanency Mentor, youth will build the foundation needed for a successful transition to independent living.



# “NOT ABOUT ME WITHOUT ME”

At Gilliard and Company, we firmly believe in the principle of “NOT ABOUT ME WITHOUT ME” for all of our clients. This means that your voice and participation are central to every decision and action related to your case plan. However, if clients do not attend meetings and actively engage in their case plan, it can hinder and delay their success in graduating from our program. It is crucial to be present and responsive to all communication related to your case plan to ensure your progress and success.

Ways clients can be active in their case plan:

- Attend all meetings
- Communicate regularly
- Set and review goals
- Engage in life skills training
- Pursue educational and job opportunities
- Take initiative to seek resources
- Complete assignments promptly
- Participate in decision-making
- Be honest and transparent
- Seek feedback for progress and improvement.





If our program interests you and you would like to schedule an interview, please follow the steps below.

### Next Steps for Youth Referrals:

**Provide Your Availability:** Please share your earliest availability to schedule an interview meeting with us.

**Contact Us:** You can reach out to us via email or by phone to set up your interview:

Email: [whitney@gilliardandcompany.org](mailto:whitney@gilliardandcompany.org)

Phone: 912.208.8077

After the interview, you will receive a letter of acceptance or denial based on the outcome of our discussion.



*“Gilliard and Company is grateful for your consideration and interest in our program. We are proud to have an 83% success rate, a testament to the hard work and dedication of both our team and the young people we serve. However, it is important to note that our success rate is directly tied to the efforts our clients make towards their transition out of foster care. Your commitment and active participation are key to achieving a successful outcome.”*

- Whitney Lam Gilliard, Founder & CEO



**G&Co**

MEETING THE NEEDS OF FOSTER CARE

# CHAT WITH SIMON

